

Features:

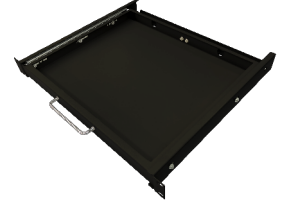
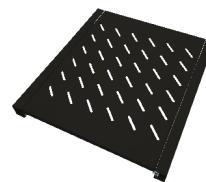
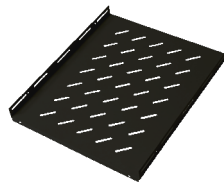
1. Comply with ANSI/EIA; RS-310-D; DIN41491; IEC297-2; DIN41494; PART7 GB/T3047.2-92 standard; compatible with 19" international standard, metric system and ETSI standard.
2. SPCC cold roll steel frame, Maximum static loading: 800KG.
3. Adjustable feet and heavy duty castors enable convenient-moving and reliable-fixing.
4. 2.0mm thick Mounting Rails and 1.5mm thick Mounting Angle enables sturdy mount.
5. Tempered glass front door, split preforated rear door for mechanical protections.
6. Cable Entry on top cover and bottom panel enables hassle-free cable patching.
7. Removable front & rear door and side panel for accessing facilities and ventilation.
8. Vent holes on the top and bottom provide good ventilation throughout the rack.

Accessories:

Fixed Shelf
NFS60/80/90/100B

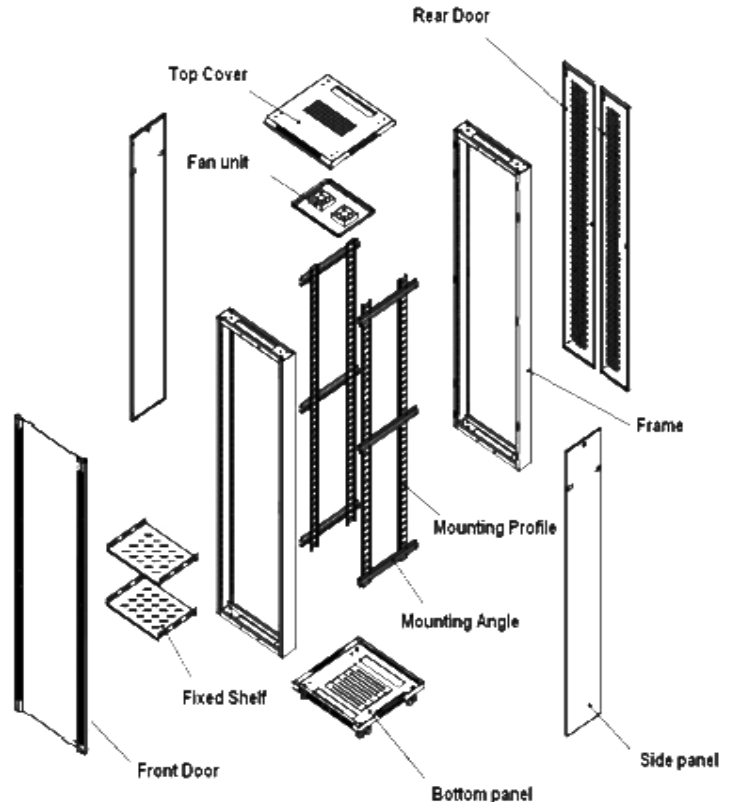
Sliding Shelf
NSS60/80/90/100B

KeyBoard Drawer
UKBDB



Models and Dimensions:

Model	U	H	W	D	Fixed Shelf	AC Fan	M6 Screw	Weight (KG)
600mm Width								
RS6618B	18	988	600	600	1	2	20	53
RS6818B		988	600	800	1	4	20	57
RS6622B	22	1166	600	600	1	2	20	61
RS6822B		1166	600	800	1	4	20	68
RS6922B		1166	600	900	1	4	20	71
RS6022B	27	1166	600	1000	1	4	20	74
RS6627B		1388	600	600	1	2	20	67
RS6827B		1388	600	800	1	4	20	76
RS6927B		1388	600	900	1	4	20	80
RS6027B	32	1388	600	1000	1	4	20	91
RS6632B		1610	600	600	1	2	20	74
RS6832B		1610	600	800	1	4	20	88
RS6932B		1610	600	900	1	4	20	102
RS6032B		1610	600	1000	1	4	20	108
RS6637B	37	1833	600	600	2	2	40	82
RS6837B		1833	600	800	2	4	40	95
RS6937B		1833	600	900	2	4	40	103
RS6037B		1833	600	1000	2	4	40	112
RS6642B	42	2055	600	600	2	2	40	90
RS6842B		2055	600	800	2	4	40	112
RS6942B		2055	600	900	2	4	40	118
RS6042B		2055	600	1000	2	4	40	125
RS6142B	47	2055	600	1100	2	4	40	129
RS6242B		2055	600	1200	2	4	40	132
RS6847B	47	2277	600	800	2	4	40	128
RS6947B		2277	600	900	2	4	40	139
RS6047B		2277	600	1000	2	4	40	142



Structural Diagram