



## Features:

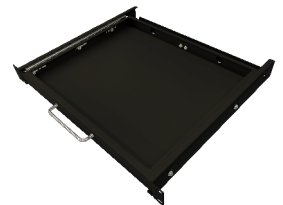
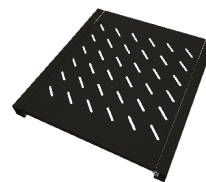
1. Comply with ANSI/EIA; RS-310-D; DIN41491; IEC297-2; DIN41494; PART7 GB/T3047.2-92 standard; compatible with 19" international standard, metric system and ETSI standard.
2. SPCC cold roll steel frame, Maximum static loading: 800KG.
3. Adjustable feet and heavy duty castors enable convenient-moving and reliable-fixing.
4. 2.0mm thick Mounting Rails and 1.5mm thick Mounting Angle enables sturdy mount.
5. Tempered glass front door, Steel rear door for mechanical protections.
6. Cable Entry on top cover and bottom panel enables hassle-free cable patching.
7. Removable front & rear door and side panel for accessing facilities and ventilation.
8. Vent holes on the top and bottom provide good ventilation throughout the rack.

## Accessories:

**Fixed Shelf**  
NFS60B

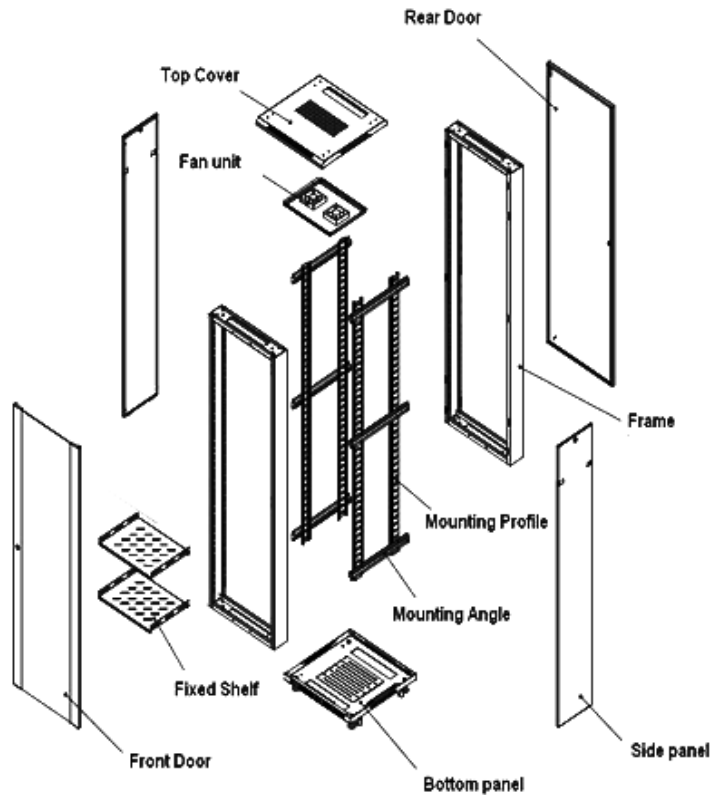
**Sliding Shelf**  
NSS60B

**KeyBoard Drawer**  
UKBDB



## Models and Dimensions:

Model	U	H	W	D	Fixed Shelf	AC Fan	M6 Screw	Weight (KG)
<b>600mm Width</b>								
RT6618B	18	988	600	600	1	2	20	55
RT6818B		988	600	800	1	4	20	59
RT6622B	22	1166	600	600	1	2	20	63
RT6822B		1166	600	800	1	4	20	70
RT6922B		1166	600	900	1	4	20	73
RT6022B		1166	600	1000	1	4	20	76
RT6627B	27	1388	600	600	1	2	20	69
RT6827B		1388	600	800	1	4	20	78
RT6927B		1388	600	900	1	4	20	82
RT6027B		1388	600	1000	1	4	20	86
RT6632B	32	1610	600	600	1	2	20	76
RT6832B		1610	600	800	1	4	20	90
RT6932B		1610	600	900	1	4	20	95
RT6032B		1610	600	1000	1	4	20	100
RT6637B	37	1833	600	600	2	2	40	84
RT6837B		1833	600	800	2	4	40	100
RT6937B		1833	600	900	2	4	40	107
RT6037B		1833	600	1000	2	4	40	115
RT6642B	42	2055	600	600	2	2	40	95
RT6842B		2055	600	800	2	4	40	115
RT6942B		2055	600	900	2	4	40	120
RT6042B		2055	600	1000	2	4	40	129



Structural Diagram

Order Needed